

## Art Sheet

# COLORFIELD

### Spencer Finch

(American, 1962)

***Back to Kansas***, 2015

Exterior household paint on canvas

Location: University of Houston

College of Technology

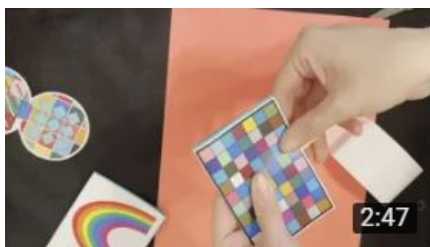
# SPENCER FINCH



## ACTIVITIES



[Virtual Tour Guided by Mike Guidry, Public Art UHS Curator](#)



[Studio Session | Colorful Thaumatrope](#)



[Watch a Conversation with Spencer Finch](#)

## FUN FACTS

- Best known for ethereal light installations that visualize his experience of natural phenomena, Spencer Finch investigates into the nature of light, color, memory and perception.
- He is compelled by 'the impossible desire to see oneself seeing'.
- Finch uses a scientific approach to gather data and a poetic sensibility to transfer that data into a work of art. This allows him to capture the nature, history, and literature behind the artwork.
- *Back to Kansas* is comprised of 70 blocks of brilliant and subtle color squares whose shades come from the artist's repeated viewing of *The Wizard of Oz* (1939). Each color in the grid corresponds to a color from the film, such as "Yellow Brick Road" and "Ruby Slippers."
- *Back to Kansas* was inspired by the Russian writer and poet Vladimir Nabokov, who it noted for his "color hearing" theory, which involved assigning color to each letter of the alphabet based on its sound.



[Listen to Spencer Finch talk about \*Back to Kansas\*.](#)

Stay Connected @PublicArtUHS  
#ColorFieldUH #ArtsAllAroundUs